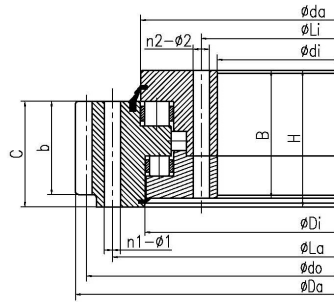


Three-row Crossed Roller Slewing Bearing With External Teeth



Lager Nr.	INA-Nr.	LYC-Nr.	Abmessungen (mm)				Einbaugröße (mm)						Strukturgröße (mm)						Zahnparameter (mm)					Axiale statische Gewicht Nennlast (kN)		
			Da	D	di	H	La	Li	n1	n2	φ1	φ2	D1	d	b	h	B	C	Di	Da	m	z	tun	x		
HOU25/500y1	YA 25 0500N		738	336	148	630	396	16	16	φ33	φ33			102	36	134	112	522	544	10	72	720			446	260
HOU25/500		131.25.500.**	665	366	148	598	402	24	24	18	18	634		80	32	138	116	526	537	5	130	650	0.5		2750	224
HOU25/500Y		132.25.500.**	666	366	148	598	402	24	24	18	18	634		80	32	138	116	463	474	6	108	648	0.5		2750	224
HOU25/560		131.25.560.**	725	426	148	658	462	24	24	18	18	694		80	32	138	116	586	597	5	142	710	0.5		3080	240
HOU25/560Y		132.25.560.**	726	426	148	658	462	24	24	18	18	694		80	32	138	116	523	534	6	118	708	0.5		3080	240
HOU25/630Y		132.25.630.**	808	496	148	728	532	28	28	18	18	764		60	32	138	116	593	604	8	98	784	0.5		3450	270
HOU25/630		131.25.630.**	810	496	148	728	532	28	28	18	18	764		80	32	138	116	656	667	6	132	792	0.5		3450	270
HOU25/710Y		132.25.710.**	888	576	148	808	612	28	28	18	18	844		80	32	138	116	673	684	8	108	864	0.5		3880	300
HOU25/710		131.25.710.**	888	576	148	808	612	28	28	18	18	844		80	32	138	116	736	747	6	145	870	0.5		3880	300
HOU30/800		131.32.800.**	1008	636	182	920	680	36	36	22	22	964		120	40	172	142	830	841	8	123	984	0.5		5490	500
HOU30/800Y		132.32.800.**	1010	636	182	920	680	36	36	22	22	964		120	40	172	142	759	770	10	98	980	0.5		5490	500
HOU20/815	YA 20 0815N		1014.1	676	120	925	725	28	28	φ26	φ26			80	30	106	90	838	849	8	125	1000			761	290
HOU30/900		131.32.900.**	1104	736	182	1020	780	36	36	22	22	1064		120	40	172	142	930	941	8	135	1080	0.5		6190	600
HOU30/900Y		132.32.900.**	1110	736	182	1020	780	36	36	22	22	1064		120	40	172	142	859	870	10	108	1080	0.5		6190	600
HOU30/1000		131.32.1000.**	1220	836	182	1120	880	40	40	22	22	1164		120	40	172	142	1030	1041	10	119	1190	0.5		6890	680
HOU30/1000Y		132.32.1000.**	1224	836	182	1120	880	40	40	22	22	1164		120	40	172	142	959	970	12	99	1188	0.5		6890	680
HOU25/1030			1281.6	851	147	1158	917	48	48	φ33	φ33	1224		120	9	138	127	1056	1069	12	104	1248	0.5		7600	571.3
HOU30/1120		131.32.1120.**	1340	956	182	1240	1000	40	40	22	22	1284		120	40	172	142	1150	1161	10	131	1310	0.5		7680	820
HOU30/1120Y		132.32.1120.**	1344	956	182	1240	1000	40	40	22	22	1284		120	40	172	142	1079	1090	12	109	1308	0.5		7680	820
HOU40/1250Y		132.40.1250.**	1512	1055	220	1393	1107	45	45	26	26	1445		150	50	210	170	1200	1210	14	105	1470	0.5		11100	1200
HOU40/1250		131.40.1250.**	1512	1055	220	1393	1107	45	45	26	26	1445		150	50	210	170	1290	1300	12	123	1476	0.5		11100	1200
HOU20/1250			1461.6	1103	132	1355	1155	36	36	26	26			106	26	123	106	1282	1280	12	119	1428	0.5		7350	542
HOU20/1270	YA 20 1270N		1470.1	1132	120	1380	1180	44	44	26	26			80	30	106	90	1293	1304	8	182	1456			1206	450
HOU40/1400Y		132.40.1400.**	1666	1205	220	1543	1257	45	45	26	26	1595		150	50	210	170	1350	1360	14	116	1624	0.5		12400	1300
HOU40/1400		131.40.1400.**	1668	1205	220	1543	1257	45	45	26	26	1595		150	50	210	170	1440	1450	12	136	1632	0.5		12400	1300
HOU25/1390	YA 25 1390N		1637.8	1226	148	1520	1286	32	32	33	33			102	36	134	112	1412	1434	10	162	1620			1316	745
HOU20/1400			1635.2	1253	132	1505	1305	36	36	26	26			106	26	123	106	1432	1430	14	114	1596	0.5		8200	646
HOU20/1490	YA 20 1490N		1701.6	1352	120	1600	1400	50	50	26	26			80	30	106	90	1513	1524	12	140	1680			1421	530
HOU40/1600Y		132.40.1600.**	1872	1405	220	1743	1457	48	48	26	26	1795		150	50	210	170	1550	1560	16	114	1824	0.5		14200	1520
HOU40/1600		131.40.1600.**	1876	1405	220	1743	1457	48	48	26	26	1795		150	50	210	170	1640	1650	14	131	1834	0.5		14200	1520