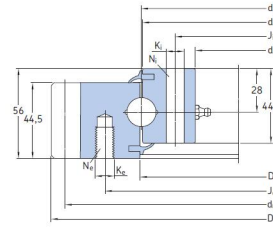


Medium size single row four-point contact ball slewing bearing



Bezeichnung	De(mm)	Dm(mm)	Di(mm)	Fe(mm)	he(mm)	Ne(mm)	Fi(mm)	hi(mm)	Ni(mm)	D (mm)	m(mm)	Z(mm)	Norm. Tooth(KN)	Max. Tooth force(KN)	Gewicht (kg)	Fig N°	axial dyn. C(KN)	axial stat. Co(KN)	raceways (r)	bolt (b)
RKS.061.20.0414	503.3	414	342	455	M12	20	368	14	24	495	5	99	17	31	31	A	169	560	1r	1b
RKS.061.20.0544	640.3	544	472	585	M12	28	498	14	32	630	6	105	23	42	43	A	188	740	2r	2b
RKS.061.20.0644	742.3	644	572	685	M12	32	598	14	36	732	6	122	23	42	52	A	200	880	3r	3b
RKS.061.20.0744	838.1	744	672	785	M12	36	698	14	40	828	6	138	23	42	59	A	211	1010	4r	4b
RKS.061.20.0844	950.1	844	772	885	M12	36	798	14	40	936	8	117	32	57	71	A	222	1150	5r	5b
RKS.061.20.0944	1046.1	944	872	985	M12	40	898	14	44	1032	8	129	32	57	77	A	231	1280	6r	6b
RKS.061.20.1094	1198.1	1094	1022	1135	M12	44	1048	14	48	1184	8	148	32	57	91	A	244	1490	7r	7b
RKS.061.25.1204	1338	1204	1119	1257	16	45	1151	16	45	1310	10	131	49	88	135	B	371	1943	8r	8b
RKS.061.25.1314	1448	1314	1229	1367	16	50	1261	16	50	1420	10	142	49	88	147	B	383	2124	9r	9b
RKS.061.25.1424	1558	1424	1339	1477	16	54	1371	16	54	1530	10	153	49	88	159	B	395	2304	10r	10b
RKS.061.25.1534	1668	1534	1449	1587	16	60	1481	16	60	1640	10	164	49	88	171	B	406	2485	11r	11b
RKS.061.25.1644	1791	1644	1536	1708	22	54	1580	22	54	1760	10	176	49	88	211	B	416	2666	12r	12b
RKS.061.25.1754	1901	1754	1646	1818	22	60	1690	22	60	1870	10	187	49	88	225	B	424	2847	13r	13b
RKS.061.30.1904	2073.4	1904	1796	1968	22	64	1840	22	64	2030	14	145	69	124	270	B	571	4048	14r	14b