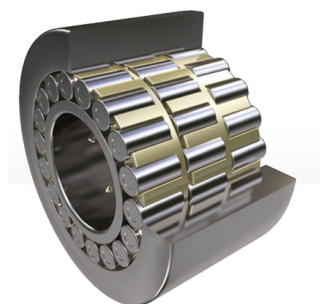


Back-up Rollers for multi-roll cold rolling mills



Lager Nr.	Grenzabmessungen (mm)						Tragzahlen (kN)		Fatigue limit	Masse (kg)
	d(Fw)	D	T	C	r	r1	Kr	Kor	load(KN) Cu	
06DC0846A	31.75	76.2	46.23	45.85	0.8	1.5	121	183	31.5	1.27
11N1226V	54.999	120	25.999	25.999	1.6	1.6	99.3	138	18.8	1.69
11DC1252	55	120	52.197	52	1.6	1.6	254	341	45.9	3.27
14DC1690LDS-1	70	160	90	90	1.5	1.5	434	546	81.2	10.1
14DC1690ADS	70	160.07	90	90	1.5	1.5	475	667	101	10.5
18DC19100NDS	90	190	100	100	3	3	593	770	109	14.7
20DC23080DS	100	225.021	80	80	1.5	1.5	759	991	136	18.2
20DC23120MDS	100	225.021	120	120	1.5	1.5	1020	1440	199	27.2
20DC23100NDS-1	100	225	100	100	3	1.5	683	838	114	21.7
20DC23120KDS-2	99.995	225	120	120	1.5	1.5	780	995	135	26
26DC30160DS	130	300	160	159.5	4	3.5	1660	2340	297	64.8
26DC30170MDS	130	300	172.644	172.644	4	3.5	1950	2900	363	72.6
26DC30170KDS-3	130	300	172.644	172.644	4	3.5	1650	2210	275	70
36DC41171DS	180	406.42	171.04	171.04	4	4	2580	3810	450	130
36DC41171ADS	180	406.42	171.04	171.04	4	1	2390	3340	389	124
36DC41171KDS	180	406.42	171.04	171.04	4	3	2090	2960	346	125
36DC41217DS+DP	179.984	406.43	223.96	217	4	0.5	2940	4500	515	161
36DC41224KDS	179.984	406.43	224.25	220	4	3	2430	3530	405	160
36DC41224QDS	180	406.42	224.25	224	4	3	2860	4230	480	162
10NUP1144	50	110	44.4	44.4	1.1	1.1	158	167	24.5	2.33
10NUP1346/48	50	125	48	46	2	1.1	202	213	28	3.39
10NUP1352	50	125	52	52	5	1.1	226	256	35	3.8
10DC1280DS	50	120	80	80	1.5	1.5	335	379	56.4	5.15

Back-up Rollers for multi-roll cold rolling mills

10DC1285DS	50	120	85	85	1.5	1.5	379	427	63.2	5.4
12DC1695DS	60	160	95	95	1.5	2	498	589	88.3	11.5
13DC17100DS	65	170	100	100	2	2	498	597	89.6	13.5
18DC23100DS	90	230	100	100	2	3	802	982	133	24.2
20DC2695DS	100	260	95	95	2	2	871	1060	143	30.2
20DC26105DS	100	260	105	105	2	2	975	787	161	33.5
18DC26125DS	90	260	125	125	2	2	1150	1520	197	41.3