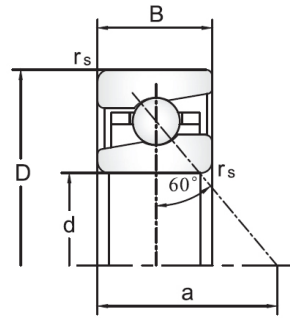


TAC/BS series Ball Screw Support Bearings



Lager		Abmessung [mm]					Belastung Ca (N)	Drehung [min ⁻¹]		Steifigkeit (DB,DF) (N)	Steifigkeit (DB,DF) (N/μm)	Drehmoment (Nm)	Gewicht KG
BS	TAK	d	D	B	rMin	r1 max		Lub.	Öl	H	H	H	
BS1574	15TAC47C	15	47	15	1	0.6	23	6900	9200	1450	630	0.09	0.146
BS1747	17TAC47C	17	47	15	1	0.6	23	6900	9200	1450	630	0.09	0.14
BS2047	20TAC47C	20	47	15	1	0.6	23	6900	9200	1450	630	0.09	0.135
BS2562	25TAC62C	25	62	15	1	0.6	29.9	5200	6900	2280	850	0.15	0.252
BS3062	30TAC62C	30	62	15	1	0.6	30.5	4900	6400	2400	890	0.16	0.224
BS3572	35TAC72C	35	72	15	1	0.6	32.5	4100	5800	2750	1030	0.18	0.31
BS4072	40TAC72C	40	72	15	1	0.6	33.5	4100	5500	2860	1080	0.19	0.275
BS4090	40TAC90C	40	90	20	1	0.6	62	3500	4600	3450	1150	0.29	0.674
BS4575	45TAC75C	45	75	15	1	0.6	34.5	3700	4900	3100	1170	0.2	0.27
BS45100	45TAC100C	45	100	20	1	0.6	64.5	3000	4100	4440	1340	0.4	0.842
BS50100	50TAC100C	50	100	20	1	0.6	66	3000	3900	4650	1410	0.42	0.778
BS55100	55TAC100C	55	100	20	1	0.6	66	3000	3900	4650	1410	0.42	0.714
BS55120	55TAC120C	55	120	20	1	0.6	70.5	2500	3500	5450	1660	0.49	1.23
BS60120	60TAC120C	60	120	20	1	0.6	70.5	2500	3500	5450	1660	0.49	1.16