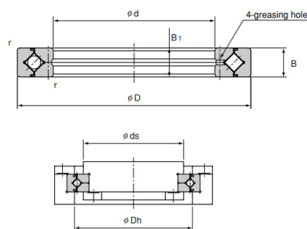
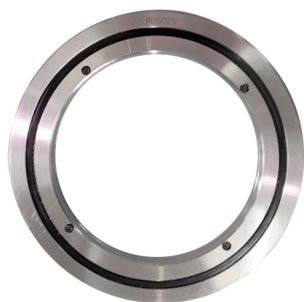


RE Crossed Roller Bearings



Modell Nr.	Große Dimensionen							Schultermaße		Tragfähigkeit (radial)		Masse KG
	Innendurchmesser d	Außendurchmesser D	Rollenteilkreisdurchmesser dp	Breite B B1	Schmierloch a b	Chamfer r (Min.)	DS	Dh	C kN	C0 kN		
RE2008	20	36	29	8	2	0.8	0.5	23.5	30.5	3.23	3.1	0.04
RE2508	25	41	34	8	2	0.8	0.5	28.5	35.5	3.63	3.83	0.05
RE3010	30	55	43.5	10	2.5	1	0.6	37	47	7.35	8.36	0.12
RE3510	35	60	48.5	10	2.5	1	0.6	41	51.5	7.64	9.12	0.13
RE4010	40	65	53.5	10	2.5	1	0.6	47.5	58	8.33	10.6	0.16
RE4510	45	70	58.5	10	2.5	1	0.6	51	61.5	8.62	11.3	0.17
RE5013	50	80	66	13	2.5	1.6	0.6	57.5	72	16.7	20.9	0.27
RE6013	60	90	76	13	2.5	1.6	0.6	68	82	18	24.3	0.3
RE7013	70	100	86	13	2.5	1.6	0.6	78	92	19.4	27.7	0.35
RE8016	80	120	101.4	16	3	1.6	0.6	91	111	30.1	42.1	0.7
RE9016	90	130	112	16	3	1.6	1	98	118	31.4	45.3	0.75
RE10016	100	140	121.1	16	3	1.6	1	109	129	31.7	48.6	0.83
RE10020	100	150	127	20	3.5	1.6	1	113	133	33.1	50.9	1.45
RE11012	110	135	123.3	12	2.5	1	0.6	117	127	12.5	24.1	0.4
RE11015	110	145	129	15	3	1.6	0.6	122	136	23.7	41.5	0.75
RE11020	110	160	137	20	3.5	1.6	1	120	140	34	54	1.56
RE12016	120	150	136	16	3	1.6	0.6	127	141	24.2	43.2	0.72
RE12025	120	180	152	25	3.5	2	1.5	133	164	66.9	100	2.62
RE13015	130	160	146	15	3	1.6	0.6	137	152	25	46.7	0.72
RE13025	130	190	162	25	3.5	2	1.5	143	174	69.5	107	2.82
RE14016	140	175	160	16	3	1.6	1	147	162	25.9	50.1	1
RE14025	140	200	172	25	3.5	2	1.5	154	185	74.8	121	2.96
RE15013	150	180	166	13	2.5	1.6	0.6	158	172	27	53.5	0.68
RE15025	150	210	182	25	3.5	2	1.5	164	194	76.8	128	3.16
RE15030	150	230	192	30	4.5	3	1.5	173	210	100	156	5.3
RE16025	160	220	192	25	3.5	2	1.5	173	204	81.7	135	3.14
RE17020	170	220	196.1	20	3.5	1.6	1.5	184	198	29	62.1	2.21
RE18025	180	240	210	25	3.5	2	1.5	195	225	84	143	3.44
RE19025	190	240	219	25	3.5	1.6	1	202	222	41.7	82.9	2.99
RE20025	200	260	230	25	3.5	2	2	215	245	84.2	157	4