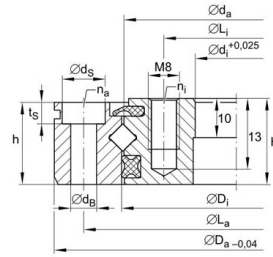
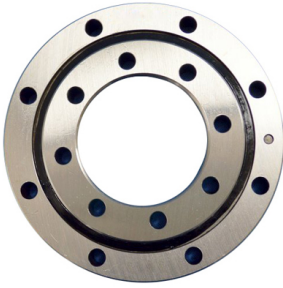


XU crossed roller slewing bearing



Main dimensions

Identification number	inner ring d mm	outer ring D mm	Rollenteilkreisdurchmesser		width					load rating □axial□		Tragfähigkeit (radial)		weight Kg
			dp mm	B mm	$\varnothing L_a$	n_a	$\varnothing L_i$	n_i	Ca KN	C0a KN	Kr KN	Kor KN		
XU050077	40	112	77	22	97	6- $\varnothing 6.6$	56	6-M8	22.4	29	14.3	14.2	1.4	
XU060094	57	140	94	26	120	6- $\varnothing 9$	70	6-M8	32.5	37.5	20.7	18.4	2.4	
XU060111	76.2	145.79	111	15.87	133.1	8- $\varnothing 6.9$	88.9	8- $\varnothing 6.9$	36	44.5	22.8	21.5	1.2	
XU080120	69	170	120	30	148	6- $\varnothing 9$	90	6-M8	56	53	35.5	26	4	
XU080149	101.6	196.85	149.6	22.22	177.8	16- $\varnothing 6.9$	115.8	16- $\varnothing 6.9$	63	66	40	32.5	3.6	
XU120179	124.5	234	179	35	214	12- $\varnothing 11$	144.5	12- $\varnothing 11$	118	179	75	88	7	
XU120222	140	300	222	36	270	12-M16	170	12- $\varnothing 18$	133	275	85	131	12	
XU160260	191	329	260	46	305	20- $\varnothing 14$	215	20- $\varnothing 14$	212	350	135	173	16	
XU080264	215.9	311	264	25.4	295.3	12- $\varnothing 8.7$	231.8	12- $\varnothing 8.7$	85	117	54	57	6.9	
XU160405	336	474	405	46	450	30- $\varnothing 14$	360	30- $\varnothing 14$	270	550	172	270	25	
XU080430	380	480	430	26	462	20- $\varnothing 9$	398	20-M10	110	280	70	138	12	
XU300515	384	646	515	86	598	18- $\varnothing 26$	432	18- $\varnothing 26$	720	1370	455	670	115	