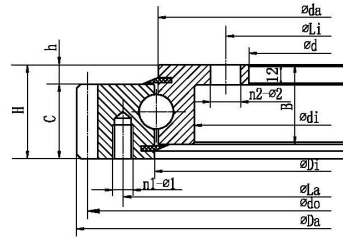


Four point contact ball slewing bearing (with inner flange and external gear type)



| Lager | | Rothe Erde Model | TG Model | Grenzabmessungen (mm) | | | Bolt hole diameter (mm) | | | | | Structure dimensions (mm) | | | | | | | | | | Gear Parameters (mm) | | | | Basic load rating (KN) | Weight (KG) |
|---------------|---------------|------------------|---------------|-----------------------|-----|----|-------------------------|-----|----|----|-----|---------------------------|-----|-------|------|------|------|------|-------|-------|----|----------------------|-----|-----|------|------------------------|-------------|
| Modell | INA Model | | | Da | D | di | H | La | Li | n1 | n2 | φ1 | φ2 | D1 | d | b | h | B | C | Di | da | m | z | tun | x | | |
| SLOR20/414Y | VLA200414N ZT | | | 503.3 | 304 | 56 | 455 | 332 | 10 | 12 | M12 | φ18 | 480 | 369.5 | 40 | 8.5 | 47.5 | 44.5 | 415.5 | 412.5 | 5 | 99 | 495 | | 600 | 31.2 | |
| SLOR20/414 | VLA200414N | | | 503.3 | 304 | 56 | 455 | 332 | 10 | 12 | M12 | 18 | 480 | | 40 | 11.5 | 47.5 | 44.5 | 415.5 | 412.5 | 5 | 99 | 495 | | 295 | 29.5 | |
| SLOR20/414Y1 | | 231.20.0400.013 | | 504 | 304 | 56 | 455 | 332 | 10 | 12 | M12 | 18 | | | 45.5 | 10.5 | 45.5 | 45.5 | 415.5 | 412.5 | 5 | 99 | 495 | | 250 | 29.3 | |
| SLOR20/414Y2 | | 231.20.0400.503 | | 504 | 304 | 56 | 455 | 332 | 10 | 24 | M12 | 18 | | | 45.5 | 10.5 | 45.5 | 45.5 | 415.5 | 412.5 | 5 | 99 | 495 | | 250 | 29 | |
| SLOR20/414 | | | E.505.20.00.C | 504 | 304 | 56 | 455 | 332 | 10 | 12 | M12 | φ18 | | 375 | 46 | 10 | 46 | 46 | 415.5 | 412.5 | 5 | 99 | 495 | | 500 | 33.3 | |
| SLOR20/414A | | | E.505.20.C | 504 | 304 | 56 | 455 | 332 | 10 | 12 | M12 | φ18 | | 373 | 46 | 10 | 46 | 46 | 415.5 | 412.5 | 5 | 99 | 495 | | 640 | 34 | |
| SLOR20/505 | | | | 505 | 304 | 56 | 455 | 332 | 10 | 12 | M12 | φ18 | | 368 | 56 | 10 | 46 | 46 | 413 | 409 | 5 | 99 | 495 | | 470 | 32 | |
| SLOR20/414Y3 | | 231.21.0475.013 | | 504 | 305 | 56 | 455 | 332 | 10 | 12 | M12 | 18 | | | 45.5 | 10.5 | 45.5 | 45.5 | 417 | 412.5 | 5 | 99 | 495 | | 250 | 29.3 | |
| SLOR20/544Y | VLA200544N ZT | | | 640.3 | 434 | 56 | 585 | 462 | 14 | 14 | M12 | φ18 | | 502 | 44.5 | 11.5 | 44.5 | 44.5 | 545.5 | 542.5 | 6 | 105 | 630 | | 670 | 41.5 | |
| SLOR20/544Y1 | VLA200544N ZT | | | 640.3 | 434 | 56 | 585 | 462 | 14 | 14 | M12 | φ18 | | 499.5 | 44.5 | 8.5 | 47.5 | 44.5 | 545.5 | 542.5 | 6 | 105 | 630 | | 790 | 41.6 | |
| SLOR20/544Y4 | VLA200544N | | | 640.3 | 434 | 56 | 585 | 462 | 14 | 14 | M12 | 18 | | | 44.5 | 11.5 | 47.5 | 44.5 | 545.5 | 542.5 | 6 | 105 | 630 | | 385 | 41.5 | |
| SLOR20/544Y3 | | 231.20.0500.013 | | 640.8 | 434 | 56 | 585 | 462 | 14 | 14 | M12 | 18 | | | 45.5 | 10.5 | 45.5 | 45.5 | 545.5 | 542.5 | 6 | 105 | 630 | | 330 | 39.5 | |
| SLOR20/544Y5 | | 231.20.0500.503 | | 640.8 | 434 | 56 | 585 | 462 | 14 | 28 | M12 | 18 | | | 45.5 | 10.5 | 45.5 | 45.5 | 545.5 | 542.5 | 6 | 105 | 630 | | 330 | 39.2 | |
| SLOR20/544 | | | E.650.20.C | 640.8 | 434 | 56 | 585 | 462 | 14 | 14 | M12 | φ18 | | 505 | 46 | 10 | 46 | 46 | 545.5 | 542.5 | 6 | 105 | 630 | | 670 | 40.6 | |
| SLOR20/544B | | 231.20.0500.503 | | 640.8 | 434 | 56 | 585 | 462 | 14 | 28 | M12 | φ18 | | 505 | 45.5 | 10.5 | 45.5 | 45.5 | 545.5 | 542.5 | 6 | 105 | 630 | | 660 | 40.6 | |
| SLOR20/544Y2 | | 231.21.0575.013 | | 640.8 | 435 | 56 | 585 | 462 | 14 | 14 | M12 | 18 | | | 45.5 | 10.5 | 45.5 | 45.5 | 547 | 542.5 | 6 | 105 | 630 | | 330 | 39.5 | |
| SLOR20/643 | | | | 742 | 534 | 56 | 685 | 562 | 16 | 16 | M12 | φ18 | | 598 | 46 | 10 | 46 | 46 | 645 | 641 | 6 | 122 | 732 | | 740 | 51.4 | |
| SLOR20/644Y | VLA200644N ZT | | | 742.3 | 534 | 56 | 685 | 562 | 16 | 16 | M12 | φ18 | | 599.5 | 44.5 | 8.5 | 47.5 | 44.5 | 645.5 | 642.5 | 6 | 122 | 732 | | 900 | 50 | |
| SLOR 20/644Y1 | VLA 200644N | | | 742.3 | 534 | 56 | 685 | 562 | 16 | 16 | M12 | 18 | | | 44.5 | 11.5 | 47.5 | 44.5 | 645.5 | 642.5 | 6 | 122 | 732 | | 455 | 48.5 | |
| SLOR20/644Y2 | | 231.20.0600.013 | | 742.8 | 534 | 56 | 685 | 562 | 16 | 16 | M12 | 18 | | | 45.5 | 10.5 | 45.5 | 45.5 | 645.5 | 642.5 | 6 | 122 | 732 | | 390 | 47.6 | |
| SLOR20/644Y3 | | 231.20.0600.503 | | 742.8 | 534 | 56 | 685 | 562 | 16 | 32 | M12 | 18 | | | 45.5 | 10.5 | 45.5 | 45.5 | 645.5 | 642.5 | 6 | 122 | 732 | | 390 | 47.2 | |
| SLOR20/644 | | | E.750.20.00.C | 742.8 | 534 | 56 | 685 | 562 | 16 | 16 | M12 | φ18 | | 605 | 46 | 10 | 46 | 46 | 645.5 | 642.5 | 6 | 122 | 732 | | 780 | 55.1 | |
| SLOR20/644Y4 | | 231.21.0675.013 | | 742.8 | 535 | 56 | 685 | 562 | 16 | 16 | M12 | 18 | | | 45.5 | 10.5 | 45.5 | 45.5 | 647 | 642.5 | 6 | 122 | 732 | | 390 | 47.6 | |
| SBI-287 | | | | 744 | 535 | 58 | 685 | 562 | 16 | 12 | M12 | M12 | | 600 | 46 | 12 | 46 | 46 | 643 | 642 | 6 | 122 | 732 | | 333 | 54.7 | |
| SLOR20/744Y | VLA200744N ZT | | | 838.1 | 634 | 56 | 785 | 662 | 18 | 16 | M12 | φ18 | | 699.5 | 44.5 | 8.5 | 47.5 | 44.5 | 745.5 | 742.5 | 6 | 138 | 828 | | 1050 | 56 | |
| SLOR 20/744Y2 | VLA 200744N | | | 838.1 | 634 | 56 | 785 | 662 | 18 | 16 | M12 | 18 | | | 44.5 | 11.5 | 47.5 | 44.5 | 745.5 | 742.5 | 6 | 138 | 828 | | 530 | 54.5 | |
| SLOR20/744Y3 | | 231.20.0700.013 | | 838.8 | 634 | 56 | 785 | 662 | 18 | 16 | M12 | 18 | | | 45.5 | 10.5 | 45.5 | 45.5 | 745.5 | 742.5 | 6 | 138 | 828 | | 450 | 53.5 | |
| SLOR20/744Y1 | | 231.20.0700.503 | | 838.8 | 634 | 56 | 785 | 662 | 18 | 32 | M12 | 18 | | | 45.5 | 10.5 | 45.5 | 45.5 | 745.5 | 742.5 | 6 | 138 | 828 | | 450 | 53.1 | |
| SLOR20/744 | | | E.850.20.00.C | 838.8 | 634 | 56 | 785 | 662 | 18 | 16 | M12 | φ18 | | 705 | 46 | 10 | 46 | 46 | 745.5 | 742.5 | 6 | 138 | 828 | | 910 | 60 | |
| SLOR20/743 | | | | 840 | 634 | 56 | 785 | 662 | 18 | 16 | M12 | φ18 | | 698 | 46 | 10 | 46 | 46 | 745 | 741 | 6 | 138 | 828 | | 840 | 57.7 | |