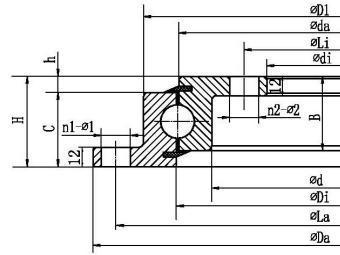


Four point contact ball slewing bearing (with flange)



Lager		Rothe Erde Model	TG Model	Grenzabmessungen (mm)				Bolt hole diameter (mm)				Structure dimensions (mm)								Gear Parameters (mm)				Basic load rating (KN)	Weight (KG)	
Modell	INA Model			Da	D	d _i	H	La	Li	n1	n2	φ1	φ2	D1	d	b	h	B	C	Di	da	m	z			tun
SLR10/360				360	256	19.05	340	276	12	12	φ9	M8	325			2.05	17	17	302	300					240	4.7
SLR20/414Y1		230.20.0400.013		518	304	56	490	332	8	12	18	18				10.5	45.5	45.5	415.5	412.5					250	23.4
SLR20/414Y3		230.20.0400.503		518	304	56	490	332	16	24	18	18				10.5	45.5	45.5	415.5	412.5					250	23
SLR20/413				518	304	56	490	332	8	12	18	φ18	454	368	10	46	46	415	411						480	25.3
SLR20/518				518	304	56	490	332	8	12	18	φ18	456	372	10	46	46	415.5	412.5						620	23.5
SLR20/414			SD.505.20.00.C	518	304	56	490	332	8	12	18	φ18	453	375	10	46	46	415.5	412.5						500	24.3
SLR20/414Y	VLU200414ZT			518	304	56	490	332	8	12	φ18	φ18	458.5	369.5	8.5	47.5	47.5	415.5	412.5						600	26.5
SLR20/414Y2	VLU200414			518	304	56	490	332	8	12	18	18				8.5	47.5	47.5	415.5	412.5					295	23.5
SLR20/414Y4		230.21.0475.013		517	305	56	490	332	8	12	18	18				10.5	45.5	45.5	415.5	412.5					250	23.4
SLR15/408				500	310	52	475	340	8	8	φ13	φ13	374	446			40	40	404	405					370	23
SBI-2502YB4K				501	333	40	480	360	12	12	M12	M12	396	446			30.5	30.5	418	420					88	13.6
SBI-2502YB4A				501	333	40	480	360	8	8	14.3	φ14.3	396	446			30.5	30.5	418	420					88	13.6
SLR20/544Y1		230.20.0500.013		648	434	56	620	462	10	14	18	18				10.5	45.5	45.5	545.5	542.5					330	31
SLR20/544Y2		230.20.0500.503		648	434	56	620	462	20	28	18	18				10.5	45.5	45.5	545.5	542.5					330	30.4
SLR20/541				648	434	56	620	462	10	14	18	φ18	582	500	11.5	44.5	44.5	542	540						840	33
SLR20/543				648	434	56	620	462	10	14	18	φ18	584	498	10	46	46	544	541						610	33.5
SLR20/544			SD.650.20.00.C	648	434	56	620	462	10	14	18	φ18	583	505	10	46	46	545.5	542.5						660	32
SLR20/648A				648	434	56	620	462	10	14	φ18	φ18	582	500	11.5	44.5	44.5	542	540						840	33
SLR20/544A		230.20.0500.013		648	434	56	620	462	20	28	φ18	φ18	583	505	10.5	45.5	45.5	545.5	542.5						660	30.4
SLR20/544Y	VLU200544ZT			648	434	56	620	462	10	14	φ18	φ18	588.5	499.5	8.5	47.5	47.5	545.5	542.5						800	35.4
SLR20/544Y4	VLU200544			648	434	56	620	462	10	14	18	18				8.5	47.5	47.5	545.5	542.5					385	31
SLR20/544Y3			SD.650.20.00.C	648	434	56	620	462	10	14	φ18	φ18	583	505	10	46	46	545.5	542.5						400	31
SLR20/544Y5		230.21.0575.013		647	435	56	620	462	10	14	18	18				10.5	45.5	45.5	545.5	542.5					330	31
SLR20/644Y3		230.20.0600.013		748	534	56	720	562	12	16	18	18				10.5	45.5	45.5	645.5	642.5					390	36.4
SLR20/644Y2		230.20.0600.503		748	534	56	720	562	24	32	18	18				10.5	45.5	45.5	645.5	642.5					390	35.8
SLR20/644			SD.750.20.00.C	748	534	56	720	562	12	16	18	φ18	683	605	10	46	46	645.5	642.5						780	38
SLR20/644A	VLU200644ZT			748	534	56	720	562	12	16	φ18	φ18	685	602	8.5	47.5	47.5	645.5	642.5						780	38
SLR20/644Y	VLU200644ZT			748	534	56	720	562	12	16	φ18	φ18	688.5	599.5	8.5	47.5	47.5	645.5	642.5						900	42
SLR20/644Y1				748	534	56	720	562	12	16	φ18	φ18	685	598	10	46	46	645.5	642.5						780	38
SLR20/644Y4	VLU200644			748	534	56	720	562	12	16	18	18				8.5	47.5	47.5	645.5	642.5					455	36.5